



NEW COLLECTION
MEMBERS 2011

NAVIGATE
experience a new world, Oceania



MUST SEE

Sunrise from Mt Vomo over the Pacific Ocean

Weekly traditional Meke dances, Lovo pitoven feasting and traditional Kava ceremony

The thrill of sharing Vomo's Hawksbill Turtle programme, carefully raising eggs laid on the island and releasing the young into the ocean – between November and February you may even see a turtle laying her eggs

Bountiful and colourful coral reefs surrounding Vomo; daily snorkelling trips or scuba diving

MUST DO

The best sunset in Fiji as from The Rocks Bar with a delicious tropical cocktail in hand

Paddle around the island in glass bottom kayaks for truly eye catching views both above and below the water

Enjoy a fishing excursion then have Vomo's chef cook your catch especially for you

Choose a private butler-service dinner in a romantic spot on the island with soft sand beneath your toes

Escape for the day to Vomo Lailai – Vomo's secluded private island.

Enjoy total privacy and luxurious seclusion.

Enjoy luxurious treatments at Vomo's dedicated Senikai Spa to compliment your holiday glow

MUST BUY

A Vomo Island cookbook from the gift shop

A beautiful flowing kaftan by Camilla or stunning swimsuit in Pacific designs and colours

A special bottle of wine from Vomo's extensive Cellar List to share at the end of another stunning Vomo day



Your hosts: Wayne and Toni-Maree Milgate

Vomo Island, Fiji Islands

T +67 9 666 7955 F +67 9 666 7997

E sales@vomo.com.fj W www.vomofiji.com

VOMO ISLAND RESORT [VOMO ISLAND, FIJI]

Vomo does family friendly like no other Fijian resort. This luxury 5-star island resort that welcomes families of all ages, honeymooners, multi-generation parties and destination weddings, is just a 15-minute helicopter flight from Nadi Airport.

Discover a paradise fringed with white sands, coral reefs, snorkelling, deep-sea fishing, scuba diving, sailing, glass-bottom boat expeditions and kayaking. Land activities include a weekly Meke performance with Lovo dinner and a Kava ceremony, an exercise gym, 9-hole chip and putt golf, badminton, tennis, croquet, petanque, hiking and jogging tracks plus a luxurious day spa.

The Reef Restaurant serves the best of locally sourced and international seafood and produce, including ingredients from the Resort's own garden. An excellent wine cellar and beverage list enhances the cuisine.

Vomo offers families the Turtle Club, a kids' club that will entertain the younger ones with Fijian games, fish feeding, singing, art and crab hunting. Early dinners with a special childrens menu are served and babysitters are available into the evening. Children will learn about Vomo's Turtle Awareness programme, which aims to help protect the Hawkesbill Turtle's traditional breeding grounds.

Vomo offers 28 luxurious air conditioned villas with your choice of Beachfront, Hillside or Garden view. Private residence 'The Royal' has three en-suite guest rooms and private pool and 'The Residence' is even greater indulgence with four en-suite guest rooms, private pool, private outdoor showers and butler service.

Member of:
NAVIGATE OCEANIA

Awards:
2011 FINALIST WORLD TRAVEL AWARDS – FIJIS LEADING RESORT
2011 FINALIST WORLD TRAVEL AWARDS – FIJIS LEADING SPA RESORT



TE KAHU [WANAKA, NEW ZEALAND]

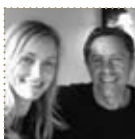
MUST SEE
 The shores of beautiful Lake Wanaka, an expansive glacial lake with panoramic views
 Wanaka Township – a picturesque lakeside town with excellent dining and markets
 The famous ‘War Birds over Wanaka’ air show, biennially at Easter
 The scenic alpine route to Queenstown – lively adventure capital of New Zealand

MUST DO

A scenic flight through Mount Aspiring National Park to majestic
 Milford Sound and the renowned Milford Track
 Explore Lake Wanaka’s braided glacial rivers, famed for boating and
 watersports, picnic sites, water skiing, kayaking and trout fly fishing
 Horse trek through alpine scenery in historic Cardrona Valley
 Ski amongst the mountain peaks at Cardrona or Treble Cone
 Discover Otago’s rich gold mining history, pioneering and high country farming.
 Scottish immigrants settled here from the early 1800’s.
 Explore Otago’s vineyards, now internationally famous for stunning pinot noir wines

MUST BUY

A unique Koru bone carving or New Zealand jade pendant,
 handcrafted by artisan carvers
 An original piece from the vibrant range of iconic artworks by
 famous New Zealand visual artist Peter Latham
 A pure New Zealand merino/mink throw from Georges of Wanaka



Your hosts: Mark and Suzannah Gray
 T +64 21 929 466

E info@tekahu.co.nz W www.tekahu.co.nz

This award-winning ‘Home of the Year 2011’ architectural masterpiece enfolds you in cutting-edge luxury whilst embracing the magnificence of Lake Wanaka and the Southern Alps. Within 50-acres of tussock and natural bush, absolute lakefront it sits serenely in its wild setting, making it the perfect get-away or get-to-know-you option.

Daily maid service is included; choose to self-cater or be cooked for by a private chef, enjoying regional organic produce and famed wines. Two cedar-clad living areas, one a media room, both lofty and welcoming with open fire places, introduce Te Kahu’s world of warm cedar, cast concrete and floors of oak or silvery schist. The house offers sensational lake views, but every room keeps something back, secrets until you walk outside.

Delightful Wanaka township just 20 minutes away. It’s a popular destination for skiing in winter and for hiking, golf, fishing and boating in summer. Treble Cone, the area’s premier ski slope, is even closer. But only if you can bare to leave Te Kahu Lake House.

Member of:

NAVIGATE OCEANIA



GREENHILL [HAWKE'S BAY]

MUST SEE

Art Deco Napier, home of the National Aquarium of New Zealand
Hawke's Bay award winning wineries including Craggy Range,
Clearview Estate, Te Mata & Elephant Hill
The world's largest mainland breeding colony of
Gannets located on Cape Kidnappers

MUST DO

A "Behind the Label" experience for wine lovers. Be taken on a 'grape to glass'
journey through the wine making process and meet local wine making identities
A "Cycles and Vines" wine experience. Using pedal power is a fun and eco-friendly
way to explore the world renowned Gimblett Gravels wine region
Step back in time with Bertie, Napier's Art Deco Ambassador. See the Art Deco
architectural delights of the region touring in Bertie's 1934 Buick car
Visit local farmers markets, meet the local food artisans and experience their passion

MUST BUY

Sheepskins and sheepskin products (Classic Sheepskin Factory)
Handcrafted chocolates (Silky Oak Chocolate Factory)
Hawke's Bay wines shipped to your door (arranged by Greenhill wine guide)

An opulent uber luxury bed and breakfast located in the heart of New Zealand's food and wine country, Hawke's Bay, located just 30 minutes to Napier, New Zealand's famed Art Deco city and just 10 minutes to your choice of over 40 world-famous vineyards.

Greenhill is an opulent, contemporary interior designed but tranquil retreat, situated on a hilltop overlooking classic farm and grazing land. Having hosted English royalty this historic mansion houses five en-suite guestrooms, most of which open to the terrace and sensational views over a magnificent, restored pergola. Behind the villa lies a gymnasium, swimming pool and private orchard.

Hosting a range of experiences by local guides and designed to provide authentic and personal experiences. Greenhill offers the best luxury bed and breakfast accommodation in Hawke's Bay.

Member of:

NAVIGATE OCEANIA

Owners: Neil Barber and Craig Hay
103 Greenhill Road, RD4, Hawke's Bay, New Zealand
T +64 6 879 9944 F +64 6 879 9940

W www.greenhill.co.nz E enquiries@greenhill.co.nz



PRINCES GATE [ROTORUA, NEW ZEALAND]

MUST SEE

Peter Reynolds Interiors and Art Gallery
Scenic flight over Mt Tarawera

Walk through the Redwood Grove and Whakarewarewa forest

The sun rising over the bird sanctuary on Lake Rotorua only 3 minutes walk
Rotorua Markets every Thursday night, Farmers Market every Saturday morning

MUST DO

A walk or run personalised by mine host Brett Marvelly, distance and pain, your call
City heritage guided walk

Live cabaret dinner show at the Princes Gate Hotel every
Friday and Saturday in winter or nightly in the summer season

High tea at the Princes Gate Hotel

A visit to Government Gardens, museum and art gallery or geothermal wonders
Maori hangi and concert

A day trip to Waitomo Caves and visit the glow worm caves

A day trip to Hobbiton in the land of the *Lord of the Rings* in Matamata
Lugeing at Skyline Skyrides

Bath your feet in the foot baths at the Kuirau natural park

MUST BUY

Dinner at the Princes Gate Hotel – a superb menu

Mud packs for facial when you are here

A Maori carving or artefact to take home as a souvenir

A piece of Jade to complement your jewellery collection

Princes Gate is a palatial timber-built colonial hotel constructed in 1897 and rail-roded to Rotorua in 1917. Privately owned and masterfully restored it offers timeless hospitality in Rotorua's best and most convenient address. Guest rooms offer the style of yesteryear with today's sophistication. A refurbishment of its premier guest suites in 2010/11 uses New Zealand's iconic designer 'Trelise Cooper's' newly launched range of soft furnishings. Amenities include SKY TV, direct dial telephones and superb bathrooms.

Memories Restaurant serves outstanding a la carte meals under high-studded kauri wood ceilings and chandeliers; an opulent place to discover New Zealand's finest wines. A big casual bar also serves espresso coffee and The Club Room features regular cabaret dinners. High Tea is a specialty, served in inimitable Princes Gate style from early morning to late afternoon. Thermal and plunge pools plus sauna too.

Step outside and you are a few minutes from the CBD, two minutes from the lake front and right at Government Gardens, five acres of beautiful landscaping and lawns. A museum, art gallery, Polynesian Spa (recommended) and 9-hole golf course too.

Member of:

NAVIGATE OCEANIA
5*QUALMARK RATING

Your hosts: Brett and Vlasta Marvelly
1057 Arawa Street, Rotorua, New Zealand
T +64 7 348 1179 F +64 7 348 6215

E info@princesgate.co.nz W www.princesgate.co.nz





MUST SEE

Huka Falls from the viewing bridge and strategic viewing locations
Mt Tongariro, Ngauruhoe and Ruapehu: magnificent snow-capped volcanoes
by fixed wing or helicopter flight

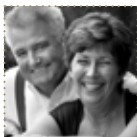
Lake Taupo: New Zealand's biggest inland water playground
Arahatia dam spillway open, flood a valley and recreate the famous Arahatia rapids
Geothermal areas of either Wai o Tapu or Orakei Korako: areas of bubbling
mud pools, gushing geysers, hot springs, and amazing silica terraces
Rich tribal Maori history of the Ngati Tuwharetoa people at Wairakei Terraces

MUST DO

Cruise on the Waikato River from the Arahatia Dam to the magnificent Huka Falls
Trout fishing on Lake Taupo with a renown rod fishing guide on the launch 'White Striker'
New Zealand River Jet Thermal Safari: through Tutukau Gorge before bathing
in a natural thermal swimming hole
Hike the Tongariro Alpine Crossing walk –18.5 kilometres of active
volcanoes, mountain springs and lava flows

MUST BUY

A unique piece of contemporary New Zealand artwork from Lava Glass
Dinner at the Terraces Bistro Largo under direction of famed
New Zealand Chef Simon Gault
New Zealand made Merino wool garments from 'Jumpers' or 'The Woolshed'
Fashion garments, indigenous arts and crafts



Your hosts: Bruce and Tricia Robertson
20 Chesham Avenue, Taupo, New Zealand
T ++ 64 7 377 4611

E stay@pointview.co.nz W www.pointview.co.nz

POINT VIEW LODGE [TAUPŌ]

This 5-Star Qualmark Guest & Hosted boutique lodge has three luxurious purpose built guest rooms with spectacular views over Lake Taupo and the Tongariro, Ruapehu and Ngauruhoe mountains. Guests can relax and enjoy the lodge's private garden, their private thermal pool and adventurous bush walks. Point View Lodge is only 5 minutes from the airport and Taupo's shopping centre and the many scenic and tourist attractions that Taupo has on offer. The Taupo region borders the Tongariro National Park.

This Boutique Guest Lodge sits above the edge of Lake Taupo with spectacular views over lake and mountains. Relaxed luxury inclusive of pre dinner drinks and aperitifs, spacious luxury accommodation and full gourmet breakfast. Dinner by arrangement. Point View Lodge offers a secluded, peaceful environment but with fishing, golf courses, Lake Taupo and mountains, cafes, restaurants and shops nearby.

Member of:

NAVIGATE OCEANIA
5*QUALMARK RATING

Awards:

2010: QUALMARK ENVIROGOLD



970 LONELY BAY LODGE [COROMANDEL]

MUST SEE

A short 10 minute walk to private and secluded Lonely Bay through the Shakespeare Reserve
Walk 5 minutes over estuary bridge to white sandy Cooks Beach – the perfect picnic setting

Visit Hot Water Beach, dig a hot pool, visit "Moko Gallery", and have a coffee or meal at 'Hot Waves Café'

Enjoy the natural beauty of the Mercury Islands; take a trip on the water with the Hahei Explorer or Whitianga Sea Caves Adventure or Whitianga Glass Bottom Boat
Take the pedestrian ferry to Whitianga in the evening to visit the "Lost Spring"
Take the opportunity to get active with a kayaking tour to Cathedral Cove

MUST DO

A visit to Cathedral Cove, which has been immortalized in the Chronicles of Narnia film, The Tale of Prince Caspian
View from the top of Paku, overlooking Tairua Harbour and Pauanui. Stunning!
For garden lovers, the herb beds and grounds of Colenso Café

MUST BUY

Wine from Mercury Bay Estates, local growers who have made a name for themselves as a top quality boutique vineyard
Hot Water Beach Olive Oil grown on the slopes behind the popular tourist spot.
A low acidity oil, some of the best in the country
Cathedral Cove Macadamia Nuts
Peruse the sculpture garden at the Eggscentric Café in Flaxmill Bay and visit local galleries for unique art by local artists.

Your host: Jane Hunter

970 Purangi Road, Lonely Bay, Coromandel, New Zealand

T +64 7 866 5688 F +64 7 868 8767

E enquiries@970lonelybay.co.nz W www.970lonelybay.co.nz



970 Lonely Bay is luxury boutique accommodation in Cooks Beach, on the famed Coromandel Peninsula. This contemporary beach house is bound to appeal to fashionistas and dedicated followers of interior fashion. Guestrooms include three king suites with en-suite, extensive mini-bar, spacious balcony and bush or water views of Purangi Estuary and Cooks Beach. The premier two guestroom (honeymoon) suite boasts an in-room fireplace, private outdoor lounge, outdoor fireplace and balcony all with stunning Pacific Ocean views.

Whether you choose to dine out at a nearby restaurant or experience 970's communal lodge style, outdoor picnic or private candle lit dining, you'll always dine on the freshest locally produced produce and seafood complemented by New Zealand wines.

970 Lonely Bay sits between two excellent white sand swimming beaches and hosts an in lodge library, TV/AV 'snug' with Bang & Olufsen sound system, separate guest indoor and outdoor bathrooms, solarium and deck, and multiple fireplaces. This boutique lodge is a perfect venue for corporate events, weddings, honeymoons and romantic getaways.

Member of:

NAVIGATE OCEANIA

COMPLIMENTARY COPY

NAVIGATE

experience a new world, Oceania

NEW COLLECTION MEMBERS 2011

4/340 Parnell Road, Parnell, Auckland, New Zealand 1052

P ++64 9 307 3633 (Head Office) F ++64 9 307 3292 E info@navigateoceania.com

www.navigateoceania.com