



# 'Something for Nothing' Enjoy Luxurious Nights

## NEW ZEALAND

### SOUTH ISLAND

#### EDENHOUSE [NELSON]



**1ST NIGHT:** Receive a 250 page Nelson Art Guide, showcasing the region's local artists  
**2ND NIGHT:** A gift pack of local saffron and citrus infused olive oils

**3RD NIGHT:** A kete harakeke (flax basket) woven by highly regarded artist, Sally Austin, using traditional Maori weaving techniques

#### SPLIT APPLE RETREAT [ABEL TASMAN]



**2ND NIGHT:** Complimentary award-winning Pinot Noir or Sauvignon Blanc + a copy of the 'Thoughtful Food Cookbook', per two pax

**3RD NIGHT:** Water taxi from the private beach access to the famed Abel Tasman National Park and enjoy a 2 hour scenic walk, per two pax  
*Two night minimum stay applies*

#### ELM TREE HOUSE [CHRISTCHURCH]



**1ST NIGHT:** On arrival enjoy a 'Elm Tree House' afternoon tea

**2ND NIGHT:** Two tickets for the Caterpillar Garden Tours - offering informative and fully

guided electric shuttle tours through Christchurch's spectacular city centre Botanic Gardens

**3RD NIGHT:** Buy one ticket to see the Hector Dolphins in their natural habitat at Akaroa and receive one complimentary ticket

#### HUNTLEY LODGE [CHRISTCHURCH]



**1ST NIGHT:** Transfers from to or from Christchurch airport

**2ND NIGHT:** Receive a gourmet lunch picnic hamper prepared by Huntley Lodge chef using

regional delicacies

**3RD NIGHT:** Receive a NZ\$100 house credit to dine in the Huntley Lodge onsite restaurant

#### RELEASE PRIVATE RETREAT [WANAKA]



**1ST NIGHT:** Savour an internationally award winning bottle of 'Pinot Noir' from Central Otago Valli wines

**2ND NIGHT:** Relax and unwind with a 1 hour

massage at Release

**3RD NIGHT:** Prepared by the retreats private chef is a four course dinner showcasing the very best of regional produce

#### REMARKABLES LODGE [QUEENSTOWN]



**1ST NIGHT:** A complimentary copy of New Zealand Landscapes by Andris Apse to take home as a visual reminder of the New Zealand's stunning

landscapes

**2ND NIGHT:** Two tickets on Queenstown's gondola to view the beautiful lake and surrounding scenery

**3RD NIGHT:** A cruise for two on Lake Wakatipu on the vintage steamship SS Earnslaw, the Lady of the Lake



GREENHILL [HAWKE'S BAY]



Navigate Oceania's promotion generously adds 'Something for Nothing' for all guests staying 1,2,3 nights at Navigate properties within New Zealand.

The Navigate Oceania New Zealand family of luxurious lodges, country estates, spa resorts, villas, boutique hotels and luxury bed & breakfasts stretches from the Bay of Islands in the North Island to Queenstown in the South Island. You can book confidently, assured that as well as award-winning experiences and luxury, your traveller will be rewarded with something extra during their stay and not pay a cent extra. Valid 31.03.2012 and promotion only includes the properties listed in this brochure.

A member of



**NAVIGATE**

Experience a new world, OCEANIA

**Terms and Conditions 1,2,3 go!** Not able to be combined with any other offer or promotion or an existing booking; Only valid when used with wholesale or inbound contracted rates for 2011/12 seasons; Validity to 31 March 2012; VERY IMPORTANT: To ensure your guests receive the '1,2,3' promotional added value you must include reference to '1,2,3' promotion in your reservation confirmation or added value will not be honoured; Not available in conjunction with negotiated group rates.

V2



DELAMORE LODGE



EDENHOUSE



RELEASE PRIVATE RETREAT



TAKATU LODGE & VINEYARD

## NEW ZEALAND

### NORTH ISLAND

#### PAIHIA BEACH RESORT & SPA

[BAY OF ISLANDS]



**1ST NIGHT:** Relax in a complimentary one hour sauna steam room at La Spa Naturale (onsite) for two people

**2ND NIGHT:** Indulge in either a 30 minute facial or a traditional Indian head massage for two people at La Spa Naturale (onsite)

**3RD NIGHT:** Award winning onsite Pure Tastes Restaurant – receive one NZ\$50 meal voucher including a complimentary bottle of local ‘Marsden Estate’ wine

#### BAY OF ISLANDS LODGE

[BAY OF ISLANDS]



**1ST NIGHT:** Complimentary cooking apron with lodge branding

**2ND NIGHT:** Complimentary New Zealand Kauri wood carving trivets Koru

**3RD NIGHT:** Complimentary ‘Living Nature’ skin care gift pack

#### CLIFF EDGE LANDING [BAY OF ISLANDS]



**1ST NIGHT:** Complimentary cooking apron with lodge branding

**2ND NIGHT:** Complimentary New Zealand Kauri wood carving trivets Koru

**3RD NIGHT:** Complimentary ‘Living Nature’ skin care gift pack

#### WAIPOUA LODGE [WAIPOUA FOREST]



**1ST NIGHT:** Koha Spa Aotearoa Hydrating Hand & Body Balm (265 ml)

**2ND NIGHT:** Complimentary Bottle of Waipoua Lodge Wine

**3RD NIGHT:** Discover Trounson Forest by night with experienced local guides. Hear the illusive nocturnal Kiwi bird and, if you are lucky, possibly view them in their natural habitat

#### TAKATU LODGE & VINEYARD



**1ST NIGHT:** A bottle of the award winning Bordeaux-style red wine ‘Kawau Bay’ OR the Takatu Bando-style Poppies Rosé

**2ND NIGHT:** Two tickets to

the local Brick Bay Sculpture Trail – explore and view renowned New Zealand sculptors works, exhibited in a natural setting

**3RD NIGHT:** Hosted by the owners, experience a Takatu Estate vineyard tour, including complimentary wine tasting of one of their award-winning wines, accompanied by an antipasti dish for two people

#### STAFFORD VILLA [AUCKLAND]



**1ST NIGHT:** Enjoy a ‘Victorian Style’ afternoon tea for two people served in the conservatory or the garden at Stafford villa

**2ND NIGHT:** Two

complimentary entry tickets to Voyager New Zealand Maritime Museum galleries. Entry into the New Zealand National Maritime Museum offering ‘The Pacific Theatre’, 14 exhibition galleries, working heritage sailing fleet and the Maritime Library

**3RD NIGHT:** Two adult combo tickets for the

Museum galleries and a Voyager Live Harbour Cruise. One hour sailing excursion in the Waitemata Harbour and Viaduct Basin on the ‘Ted Ashby’, a ketch rigged deck scow typical of the fleet of scows that once operated in Northern New Zealand waters

#### COTTER HOUSE [AUCKLAND]



**1ST NIGHT:** Receive a complimentary bottle of premium New Zealand bubbles on arrival

**2ND NIGHT:** Experience a French ‘Ritz-style’ high tea at this historic

property

**3RD NIGHT:** Receive a complimentary NZ\$100 voucher for dinner booked at Cotter House

#### DELAMORE LODGE [WAIHEKE ISLAND]



**1ST NIGHT:** A bottle of award-winning wine from local Waiheke vineyard, ‘Man O’ War’

**2ND NIGHT:** Using fresh local Waiheke produce your choice of a picnic

hamper or a light antipasto platter for two

**3RD NIGHT:** Wine tasting for two including transfers to award winning Cable Bay Vineyard tasting rooms

#### 970 LONELY BAY [COROMANDEL]



**1ST NIGHT:** Enjoy a bottle of local Mercury Bay Estate wine and antipasto platter or high tea with homemade scones and savoury delights

**2ND NIGHT:** Gourmet picnic basket, featuring local delights, tailored to your day’s adventure, whether you choose to head over to Hot Water Beach, hike to Cathedral Cove or hang out on one of our terraces

**3RD NIGHT:** Experience a complimentary ferry

ride to Whitianga with an hour visit to the Lost Springs, a unique thermal hot water and spa experience. Featuring sculpted pool, soothing waterfalls, and a smoking volcano, more than simply a swim in hot water

#### TREETOPS LODGE & ESTATE [ROTORUA]



**1ST NIGHT:** With a gourmet backpack picnic for two, take the gentle hike to the spectacular Bridal Veil Waterfalls

**2ND NIGHT:** Experience the romance of nature

with a guided two-hour eco tour for two

**3RD NIGHT:** A one-hour 4WD Safari into the heart of the Estate for two. Our guide will take you into the quietest corners of the valley, where you will have the opportunity to see and photograph the Estate’s wildlife

#### THE PHEASANT HOUSE [ROTORUA]



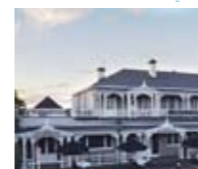
**1ST NIGHT:** With a gourmet backpack picnic for two, take the gentle hike to the spectacular Bridal Veil Waterfalls.

**2ND NIGHT:** Experience the romance of nature

with a guided two-hour eco tour for two

**3RD NIGHT:** A one-hour 4WD Safari into the heart of the Estate for two. Our guide will take you into the quietest corners of the valley, where you will have the opportunity to see and photograph the Estate’s wildlife

#### PRINCES GATE [ROTORUA]



**1ST NIGHT:** Complimentary high tea, for two people

**2ND NIGHT:** Complimentary pass for two to the Museum & Art Gallery. The museum is

housed in the historic Bathhouse Building, located in the Government Gardens. Rotorua Museum

opened in the south wing of the Bathhouse in 1969 and Rotorua Art Gallery opened in the north wing in 1977

**3RD NIGHT:** Complimentary city walk tour, for two people

#### POINT VIEW LODGE [TAUPO]



**1ST NIGHT:** Voucher for two standard coffees and viewing glass blowing at the Lava Glass Blowing Gallery and Cafe

**2ND NIGHT:** Voucher

for two tickets to the Volcanic Activity Centre explaining the secrets of the Taupo Volcanic Zone

**3RD NIGHT:** Voucher for two return tickets to the ‘Maid of the Falls’ river cruise from the Aratitia Dam to Huka Falls

#### GREENHILL [HAWKE’S BAY]



**1ST NIGHT:** Enjoy a bottle of local gold medal award winning Hawke’s Bay wine

**2ND NIGHT:** Savour a gourmet cheese and fruit platter exclusive

to Greenhill

**3RD NIGHT:** Two tickets to experience the Art Deco walk in nearby township of Napier

#### WHAREKAUHAU COUNTRY ESTATE

[MARTINBOROUGH]



**1ST NIGHT:** Enjoy in a complimentary bottle of wine – Gold Medal winning Te Kairanga Point Noir 06 or Johnner Estate 08 Sauvignon Blanc

**2ND NIGHT:** Receive in a light antipasto platter for two. The platter includes a sampling of regional and Estate grown produce; locally reared and cured meats, cheeses, marinated Estate grown vegetables, served with crackers

and artesian breads

**3RD NIGHT:** Complimentary Farm Tour – this Wharekauhau infamous farm tour, a half day that will allow you as a guest to explore the 5000-acre working sheep station by 4WD, one of New Zealand’s oldest Romney sheep station and the lodge’s private gardens

#### WHAREKAUHAU VILLAS [MARTINBOROUGH]

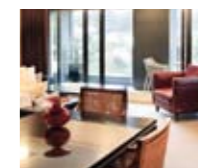


**1ST NIGHT:** Enjoy in a complimentary bottle of wine – Gold Medal winning Te Kairanga Point Noir 06 or Johnner Estate 08 Sauvignon Blanc

**2ND NIGHT:** Receive a light antipasto platter for two. Includes a sampling of regional and Estate grown produce; locally reared and cured meats, cheeses, marinated Estate grown vegetables, served with crackers and artesian breads

**3RD NIGHT:** Complimentary Farm Tour – this Wharekauhau infamous farm tour, a half day that will allow you as a guest to explore the 5000-acre working sheep station by 4WD, one of New Zealand’s oldest Romney sheep station and the lodge’s private gardens

#### BOLTON HOTEL [WELLINGTON]



**1ST NIGHT:** Savour a bottle of award winning Martinborough ‘Ata Rangi’ wine

**2ND NIGHT:** Discover our Universe with two complimentary tickets to

the Carter Observatory

**3RD NIGHT:** Two entry tickets to the Sanctuary Valley at ZEALANDIA – experience New Zealand’s rarest birds, insects and reptiles living freely